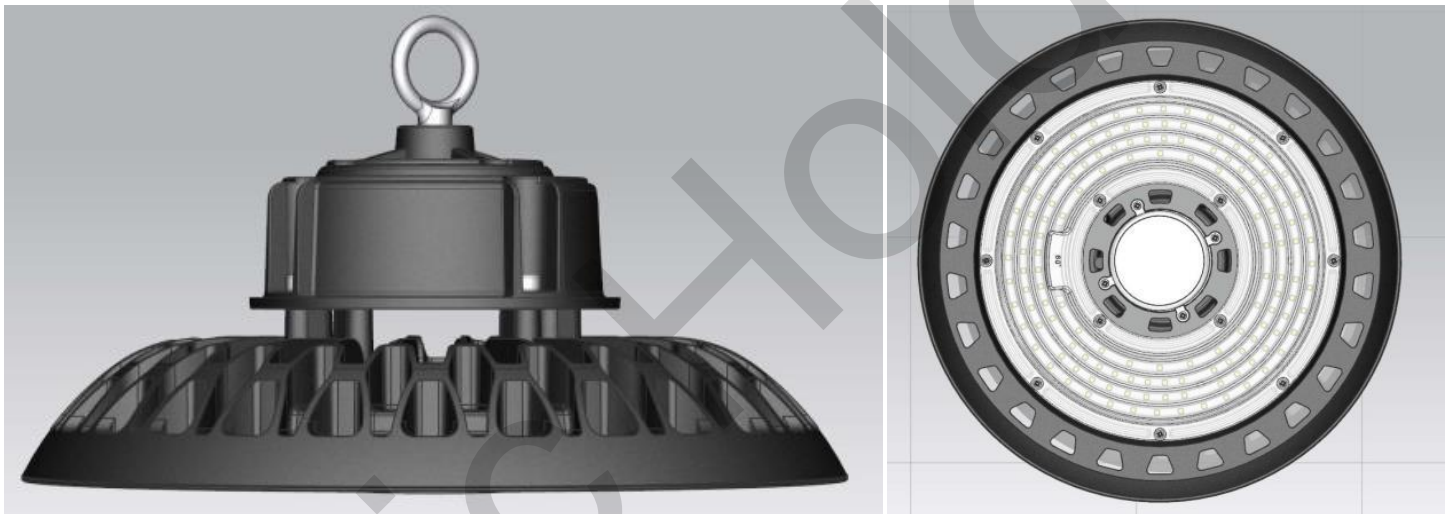


150W LED UFO Dimmable High Bay Light with Sensor

HIGH-BAY LUMINAIRES FOR COMMERCIAL AND INDUSTRIAL BUILDINGS FEATURING

- Die cast aluminium for better heat dissipation
- Dust proof and anti-corrosive
- Elegant design
- High efficiency Lifud driver



Specifications

ELECTRICAL

Wattage	150W
Voltage	100-277V
Power Factor	0.95
Total Harmonic Distortion (THD)	11.8

LIGHTING PERFORMANCE

Lumens Per Watt (Lm/W)	SMD2835 180LM/W
Color Temperature (CCT)	6500K
Color Rendering (CRI)	80
Beam Angle	120°

ENVIRONMENT

Operating Temperature	-40-55C/-22°~ 122°F
Ingress Protection Rating	IP65

DIMENSIONS (mm)

Width/Diameter	340
Height	181
Weight (kg)	4.35

CERTIFICATIONS



Geric Holdings Led lighting

